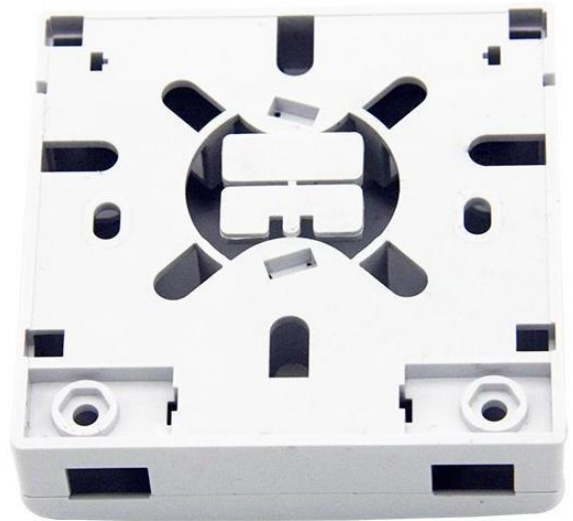
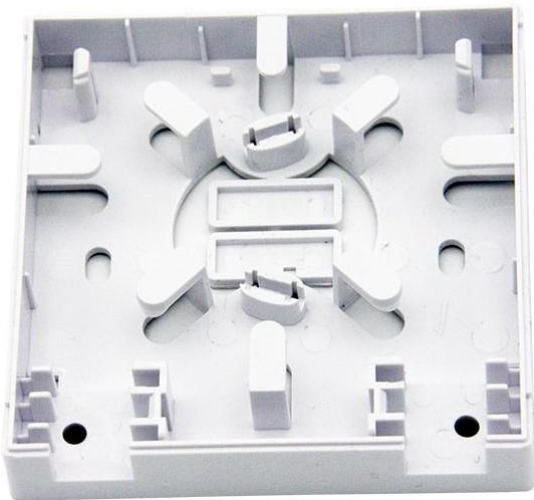




Fiber optic mini fttth terminal box





## Features

- reasonable inner space design
- suitable bending radius
- protect optical fiber
- realize FTTD(fiber to the desktop)system

## Applications

- A user end product to realize optical fiber to desktop solution.
- It can be used in home or working area to accomplish double core fiber access and port output.
- Used in the end termination of residential buildings and villas, to fix and splice with pigtailed.
- Used in FTTH indoor application, home or work area
- Provide users with optical access or data access
- Suitable for 2 pcs SC adapters
- May store surplus fiber inside, easy for operation

## Description

Square Plastic Shell 2 Holes FTTH fiber panel fiber optic terminal junction box 86 information panels 86 Desktop Box White: Indoor Fiber Optic Cable Box & Patch Panel are used in the end termination of residential buildings and villas, to fix and splice with pigtailed; Can be installed on the wall; May adapt variety of optical connection styles; Optical fiber can be managed effectively. Indoor wall or rack mounted, plastic shell, 2 holes design, screws are included here for easy to mount.

## Product Parameter

ITEM	Technical Parameters
Applicable for	3.0 x 2.0 mm Drop cable
Material	ABS
Optical fiber diameter	125u m ( 657A& 657B )
Tight buffer diameter (u m)	250um
Fiber mode	Single mode
Operation time	About 30s(no fiber cut)
Average Insert loss	s 0.15dB(1310nm & 1550nm)
Return loss	> 40dB
Fastening strength of naked fiber	> 5N
Fastening strength of naked fiber holder	> 8N
Tensile strength	>50N
Using temperature	-40°C~+ 70°C